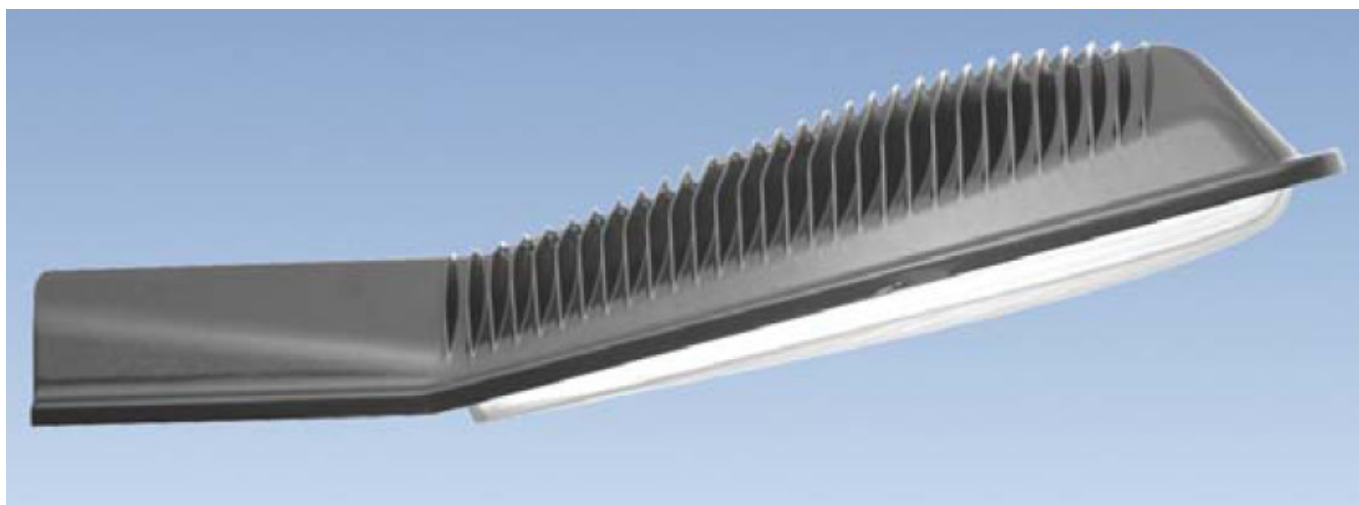


Street Light SLT500 (P125W)



DATASHEET CONTENT

<i>Parameter</i>	2
<i>Product characteristics</i>	2
<i>LED Chip</i>	3
<i>Photometric Results</i>	3
<i>Luminance Measurement</i>	4
<i>Luminous Intensity Distribution</i>	4
<i>Product Dimensions</i>	5
<i>Material for installation</i>	6
<i>Way to install</i>	6
<i>Component diagram</i>	8

Last update : 2010-09

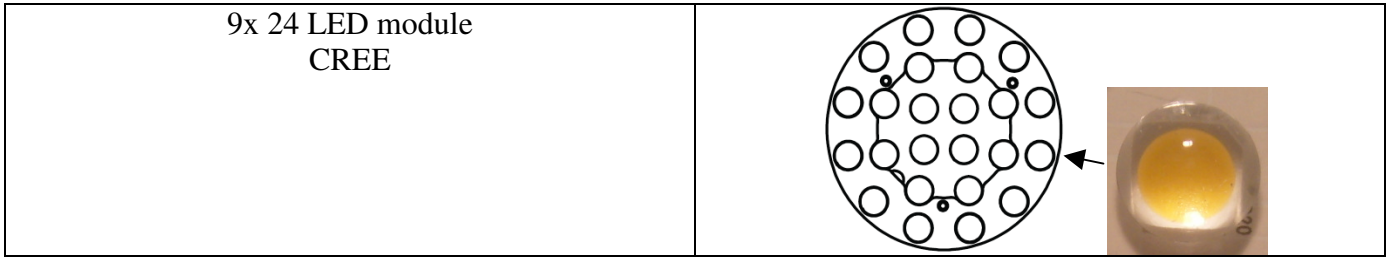
Parameter

Reference	02-SLT500P125W-01
Light source	LED
Input voltage	AC 280V
Power unit specification	24V, 6.3A
Power factor (PF)	> 0.96-0.99
Power	LED 120W, total 140W
Light efficiency	> 80lm/w
Color temperature (CCT)	3000 – 6500K
CRI	> 70
View angle	90°
Work temperature	-20°C ~ 40°C
Work humidity	10% ~ 95% RH
Life time	> 40000 Hrs
Case body and lampshade	Aluminium die casting and toughened glass
Dimension of the external box (Lx Wx H)	89x45x28cm
Quantity (PCS)	1 pcs in a carton
Net weight	13 Kg
Ip grade	IP66

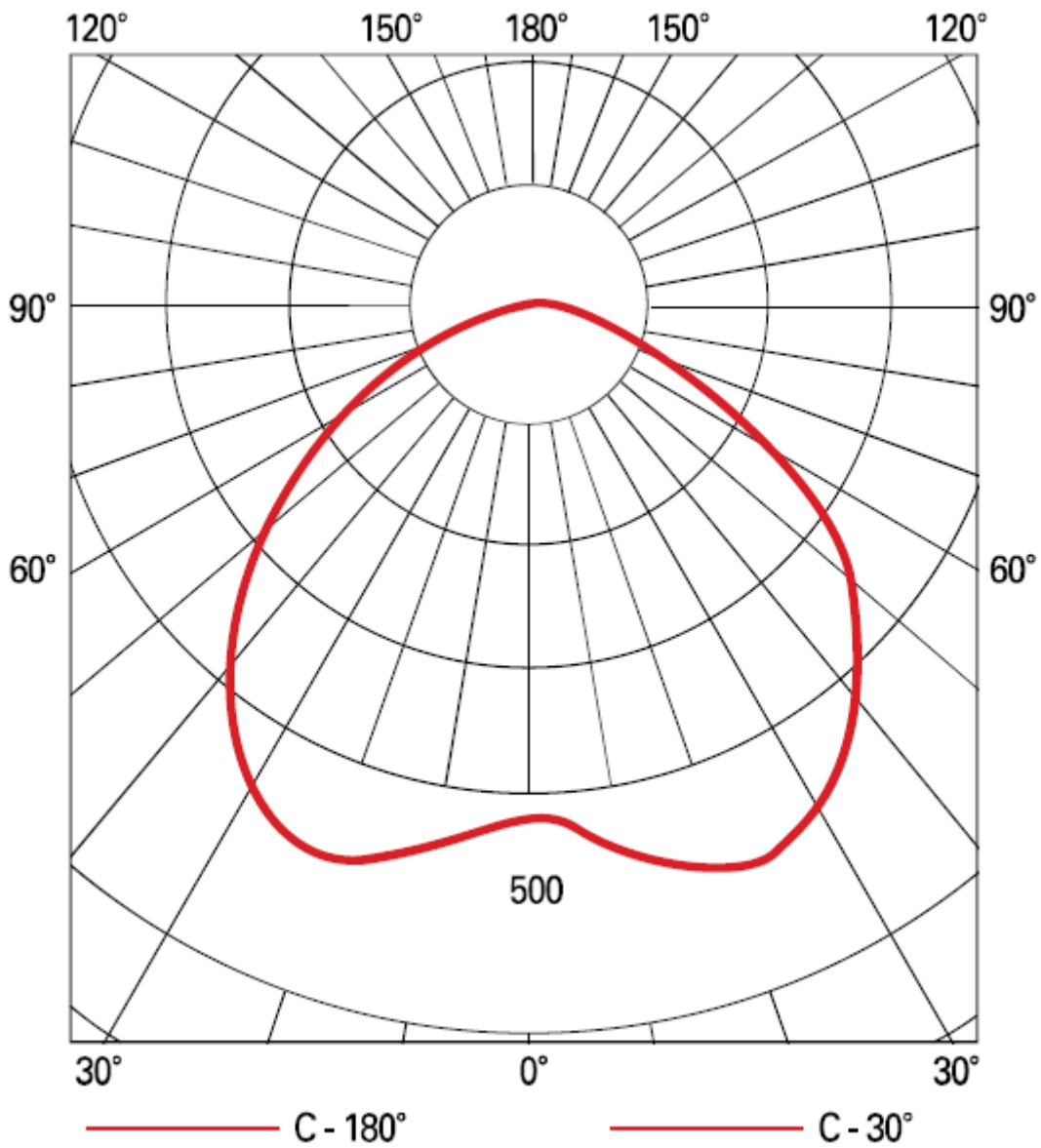
Product characteristics

1. SLT500 series high power LED street light is one of green environment protected new lights which our company chooses imported chips and self-encapsulated integrated chips LED as light source & which accord with GB7000.5 – 2005 standard (road and street Luminance lighting safety requirements).
2. Logical structure, beautiful appearance, wetness & heat endurance, perfect airproof
3. High fixture efficiency, real vision; on harm to eyes and skin; safe use.
4. Choose new types of LED lightings and outfit specially designed light-fit system. Light working life is 40000hrs which can be used over 10 years. Don't need replace lamp for it's whole life. Under same lux, the lights can save energy 60% more than high voltage sodium lamps.
5. Agile & convenient installation.
6. Environment protected, energy saved, no empoison. LED is no empoison for environment, and stable for capability which realizes real green environment protected energy saving lighting.
7. Applicability scope: SLT500 series LED street lights can be used for city roads, habitation areas, industrial areas, pedestrian crossing, squares, gardens, schools, villas, yards, etc.

LED Chip

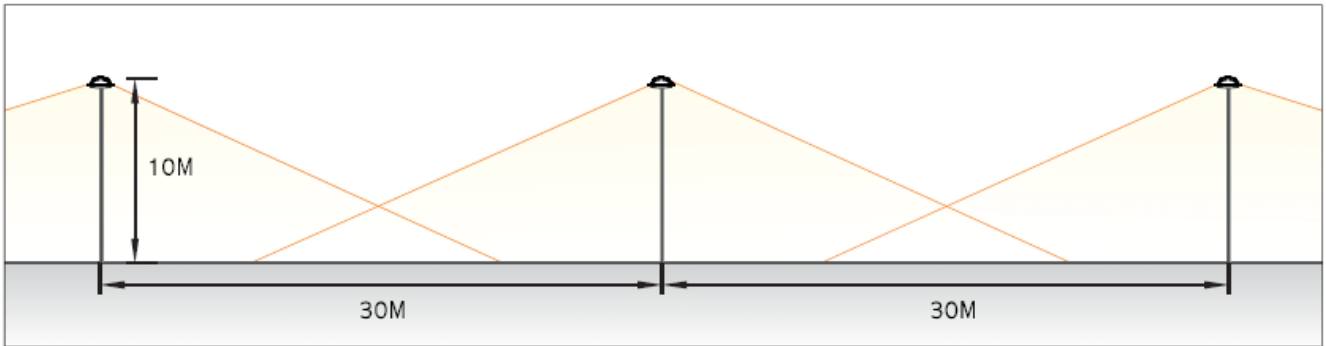


Photometric Results



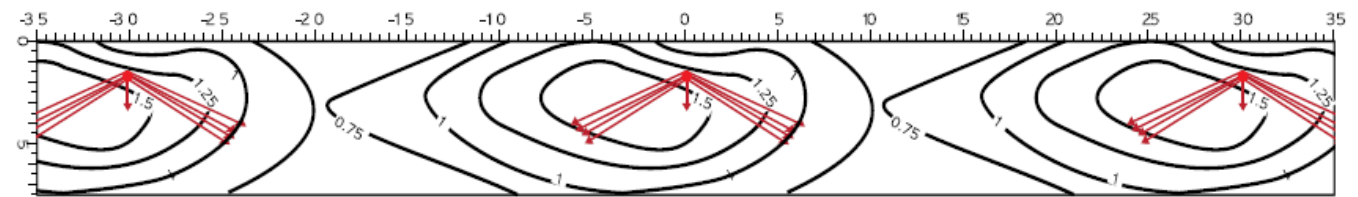
Luminance Measurement

Distribution curve of luminous intensity / Luminance-H : 10m D: 30m

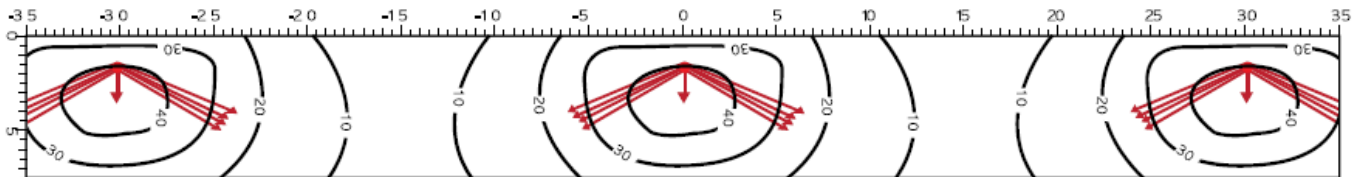


Average luminance 1.0 cd

Uniformity 0.51



Distribution curve of luminous intensity / Illuminance-H : 10m D: 30m

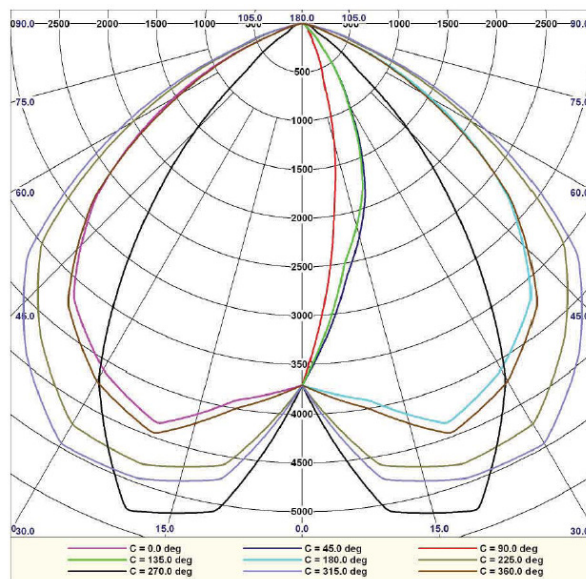


Average Illuminance : 18.2
Uniformity : 0,31

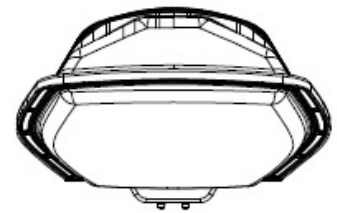
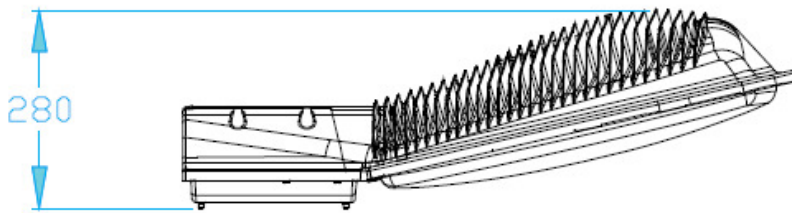
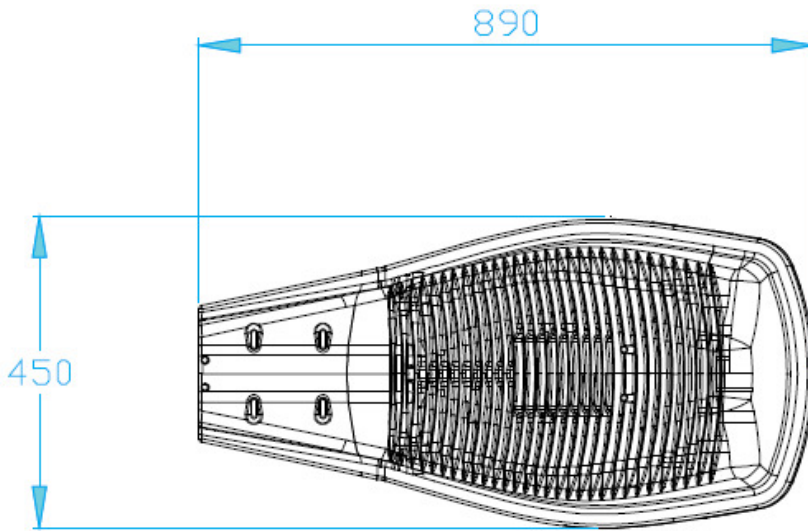
Average Illuminance 18.2 lx

Uniformity 0.31

Luminous Intensity Distribution

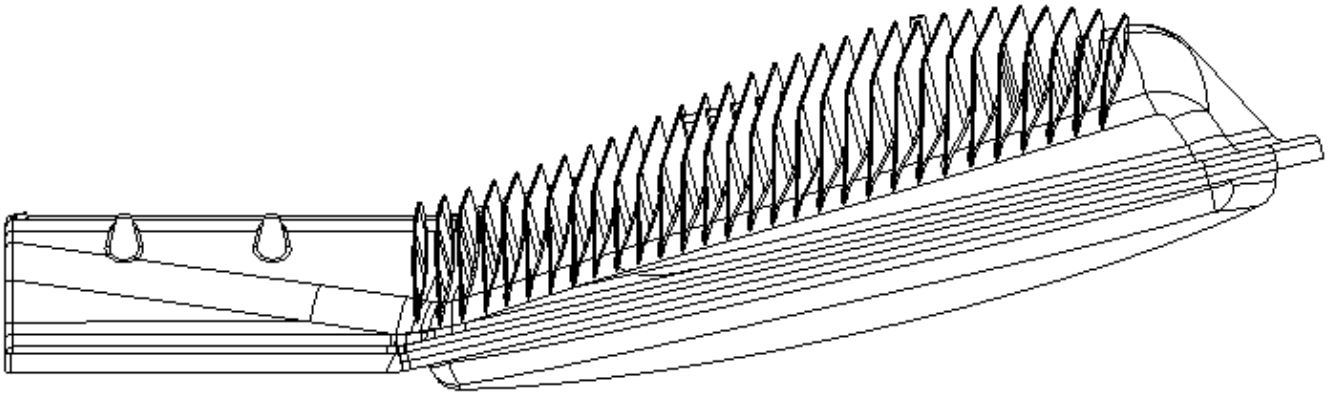


Product Dimensions



Pipe Dia : 2.5inch(60.5~63.5mm)

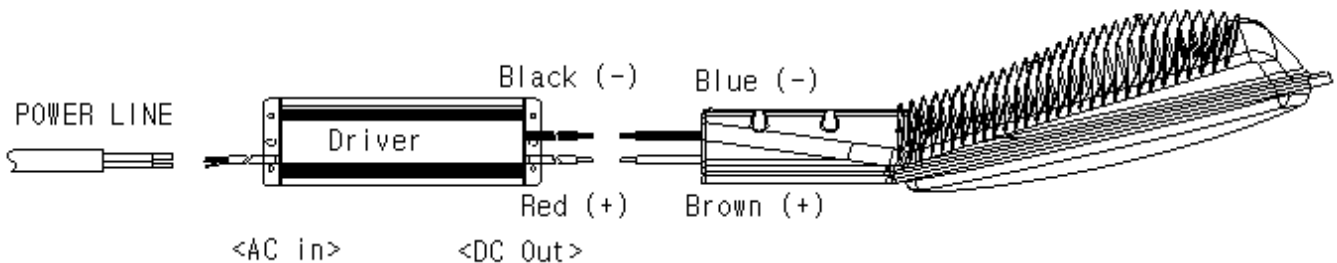
Material for installation



Way to install

- 1) Check component parts
- 2) Connect Power Line, Driver and head part of street lamp in order as a picture 1-1 connection diagram

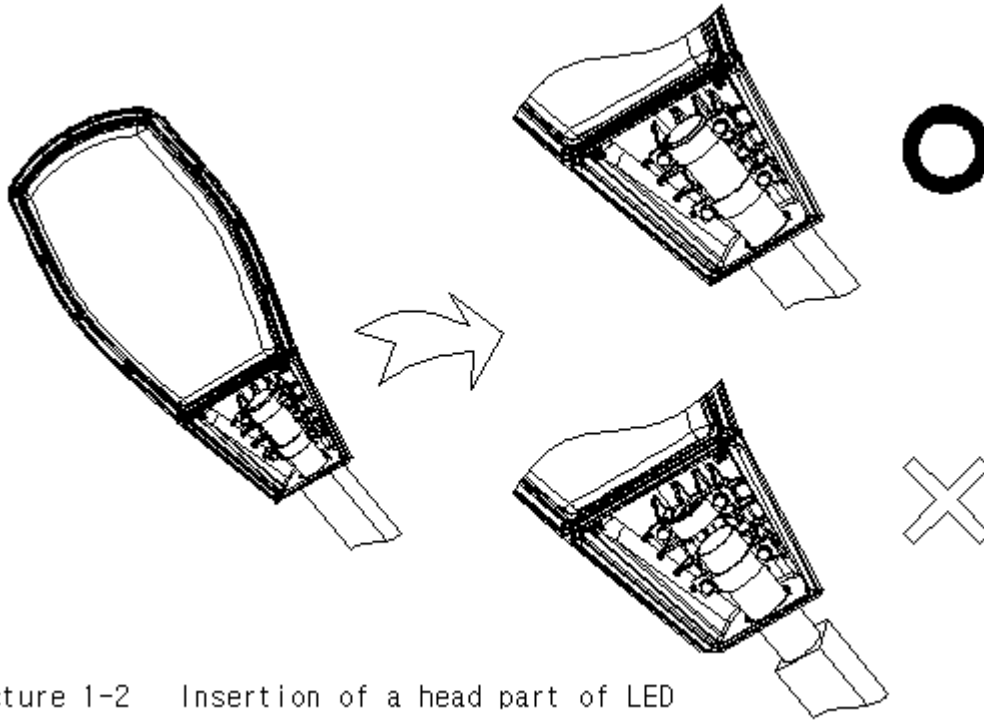
Warning : Connect wires with care of polarity, and do not expose core wire.



Picture 1-1 connection diagram

- 3) Lock the bolt into the pipe pole after fix a head part of LED street lamp into the pipe pole completely as a picture 1-2.

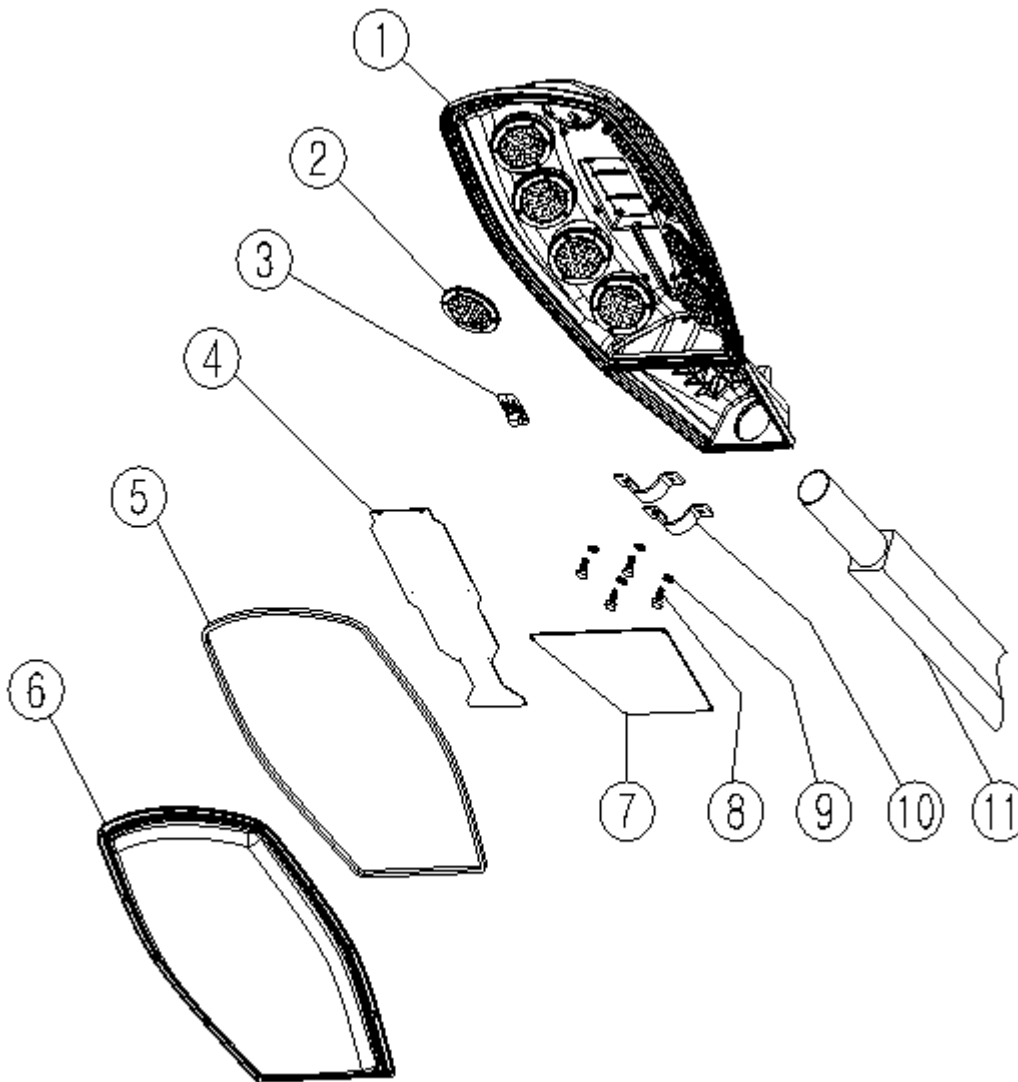
Warning : Fix a head part of LED street lamp perfectly
The depth of the pipe pole insertion is around 200mm.



Picture 1-2 Insertion of a head part of LED street lamp

4) Required tools : L-Wrench & 3mm M4 Wrench Bolt

Component diagram



NO	PART NAME	Q'TY	MATERIAL	REMARKS
1	BODY	1	ALUMINIUM D/C	
2	LED MODULE	9	LED	
3	PCB ASSY	1		
4	PLATE LINER	1	ALUMINIUM	
5	GASKET	1	SILICON RUBBER	
6	GLOBE	1	POLY CARBONATE	
7	PLATE COVER	1	ALUMINIUM	
8	BOLT HEX	4	STS	M10x L20 ~L25
9	WASHER SPRING	4	STS	M10
10	CLAMP	2	SPCC	Another name 'air walk'
11	PIPE POLE	1	Pipe of street lamp	