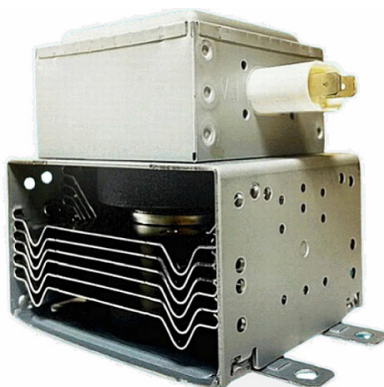
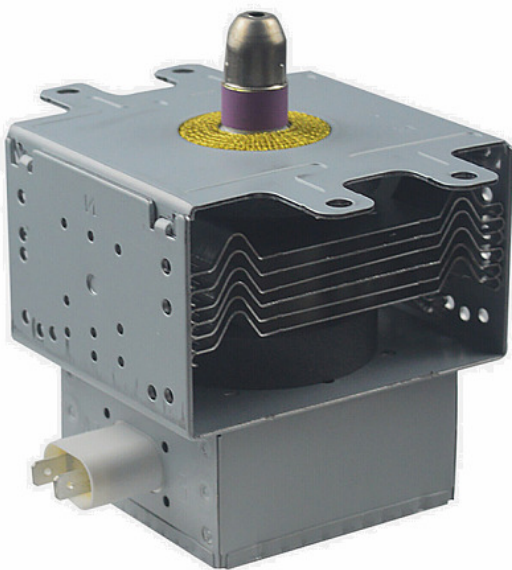




INDUSTRIAL MICROWAVE MACHINES AND EQUIPMENT





### SUN-GROUPE|INDUSTRIAL



## SUN-GROUPE

Sun-Groupe is a trade and service company representing industrial groups around the world.

Based in Neuchâtel, Switzerland and in Puyang city, Henan province in the People's Republic of China, our company has direct and strategic ties with the market and production which provides our customers with best prices, customization and the highest price quality ratio.

## IN CHINA SINCE 1992

Sun-Groupe in China has a long experience in several sectors of activities : building construction, international trade (import&export) of goods and also digitisation services and in IT developments.

Under the name of Jianxing Zaojia, Sun-Groupe is the first engineer's design bureau of building's construction in Puyang city.

The combined Chinese forces of production and Swiss expertise in product's and services quality, empowers Sun-Groupe to satisfy the customers of various domains and sectors (public, industrial, corporate, administrative, associative and individuals).



## FROM CHINA, MICROWAVE TECHNOLOGY

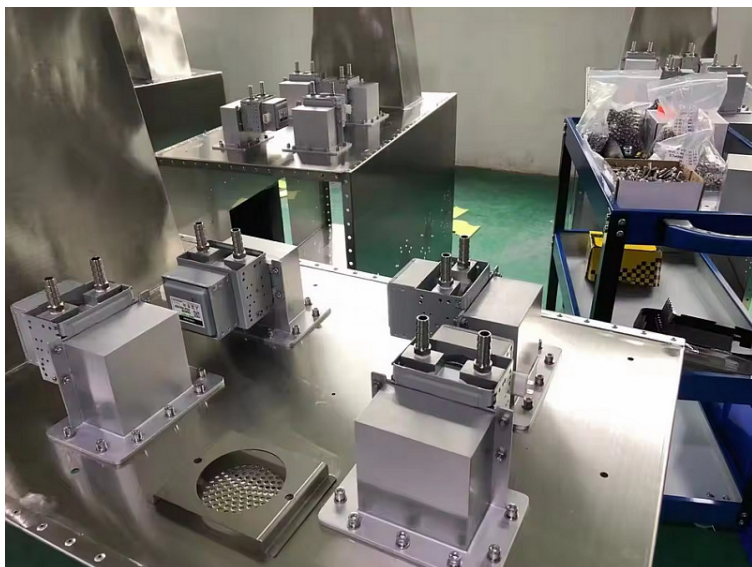
In 2018, Sun-Groupe China (Jianxing Zaojia) established contacts with industrial microwave factories for home market.

Working together with a group of partner's factories producing the best quality machines, our company opened the international market in early 2022.

Switzerland is well known as one of the most difficult market, the customers are very demanding in term of quality and quality-price ratio. Sun-Groupe selects the best products and adapted to the customer's demands. Our engineer's design bureau also develops new machines products.



### STRONG ATTENTION TO DETAIL AND HIGH STANDARDS OF QUALITY CONTROL



#### Precision Manufacturing and Rigorous Quality Control

At SUN-GROUPE's factory, meticulous attention to detail and unwavering commitment to quality control define our manufacturing ethos. Witness our dedication in action as magnetrons, the heart of our microwave machines, are meticulously installed with precision. Our assembly lines hum with activity as skilled workers ensure each component meets our exacting standards. From intricate circuitry to robust construction, every detail is scrutinized to deliver reliable performance. Trucks enter our warehouse, laden with our 5-ton machines, each the result of hundreds of working hours, they are our unwavering commitment to excellence. Trust SUN-GROUPE for precision craftsmanship and unparalleled quality in every machine and accessory we produce.



#### Continuous Improvement of Our Methodology

We introduced a culture of perpetual refinement, ensuring our methodologies evolve in tandem with industry advancements. In the dynamic landscape of the microwave industry, staying ahead requires constant innovation. Our commitment to continuous improvement is evident throughout our factory, where processes are constantly analyzed and optimized for efficiency and efficacy. From streamlining assembly lines to enhancing quality control protocols, every facet of our operations undergoes scrutiny. By harnessing the latest technologies and methodologies, we elevate our standards, delivering cutting-edge solutions to our clients. With each iteration, we push the boundaries of possibility, driving progress and excellence in microwave machine manufacturing. For forward-thinking solutions that embody the spirit of continuous improvement.



## PRODUCTS USAGE AND INDUSTRY

### BIOTECHNOLOGY



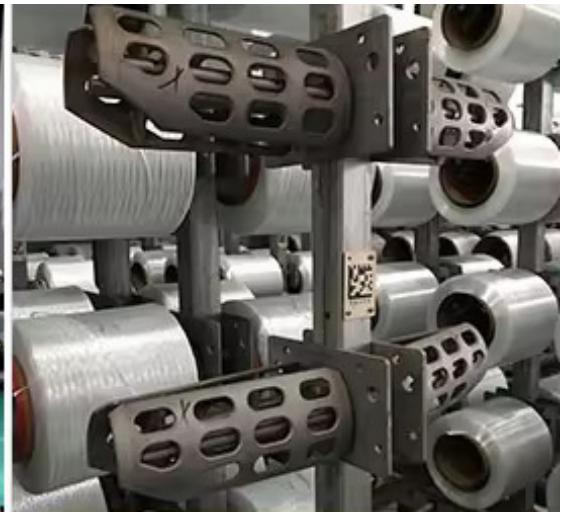
### DRYING AND STERELIZATION



### FOOD HEATING



### FIBERGLASS DRYING



### CONTINUOUS MICROWAVE EXTRUDED GRAPHITE EQUIPMENT



### INDUSTRIAL CERAMIC SET



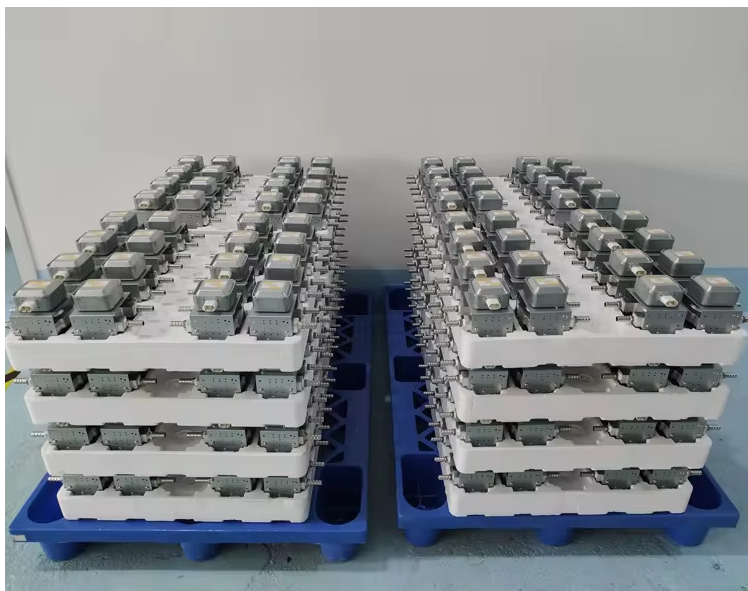
### MICROWAVE HONEYCOMB CERAMIC MACHINE



#### What is this machine ?

The Microwave Honeycomb Ceramic Machine represents a sophisticated innovation in ceramic production technology. This machine integrates the efficiency of microwave heating with the precision of honeycomb ceramic structures to revolutionize the drying process for ceramic products.

At its core, the machine utilizes microwave energy to rapidly and evenly heat ceramic materials, expediting the drying process while maintaining product integrity. The honeycomb ceramic structure within the machine ensures uniform distribution of heat, preventing hot spots and ensuring consistent drying results across all ceramic items.

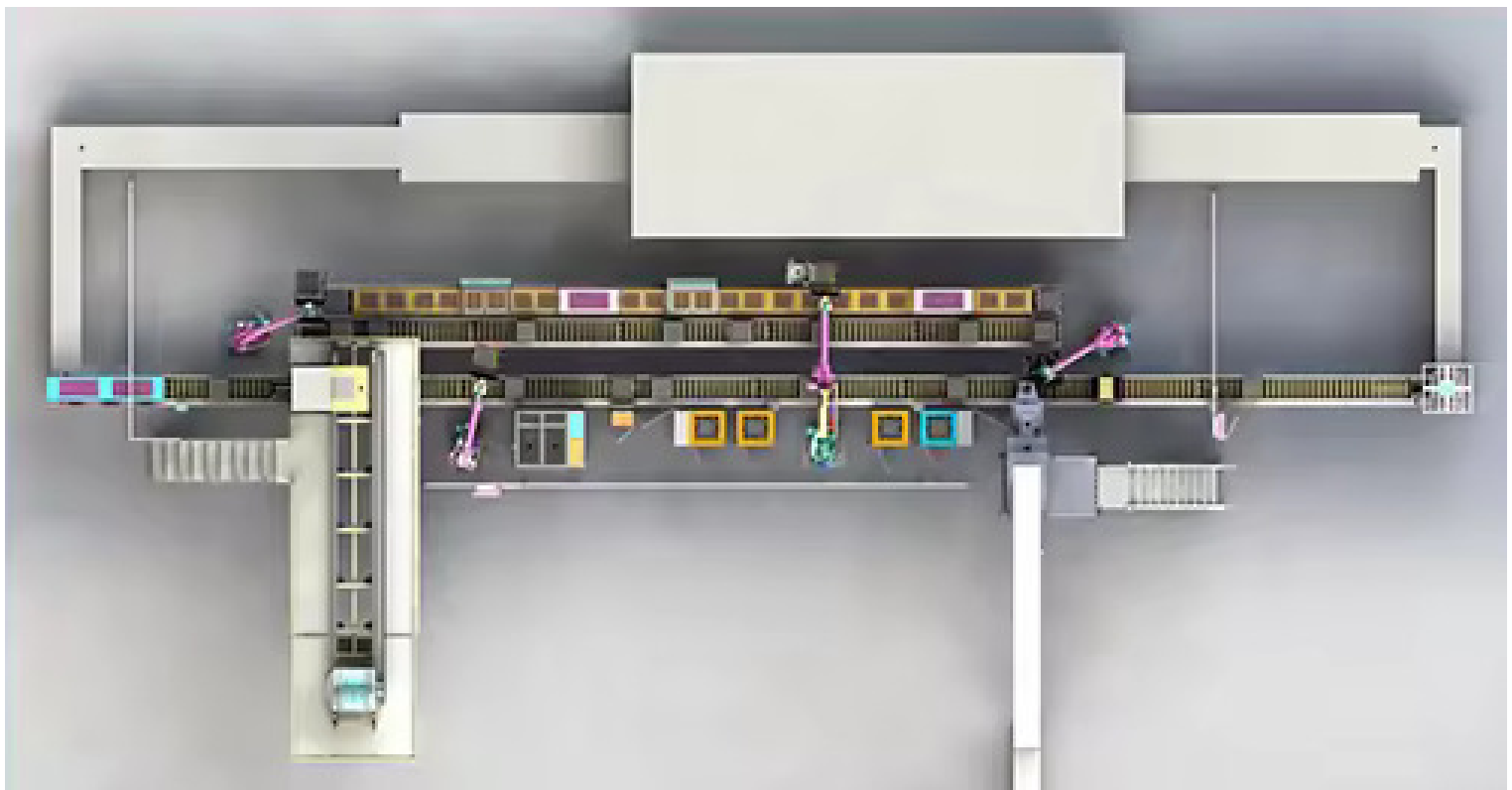


This technology offers several advantages over traditional drying methods. Firstly, it significantly reduces drying time, leading to higher productivity and throughput. Secondly, it allows for more precise control over the drying process, minimizing the risk of over-drying or uneven drying.

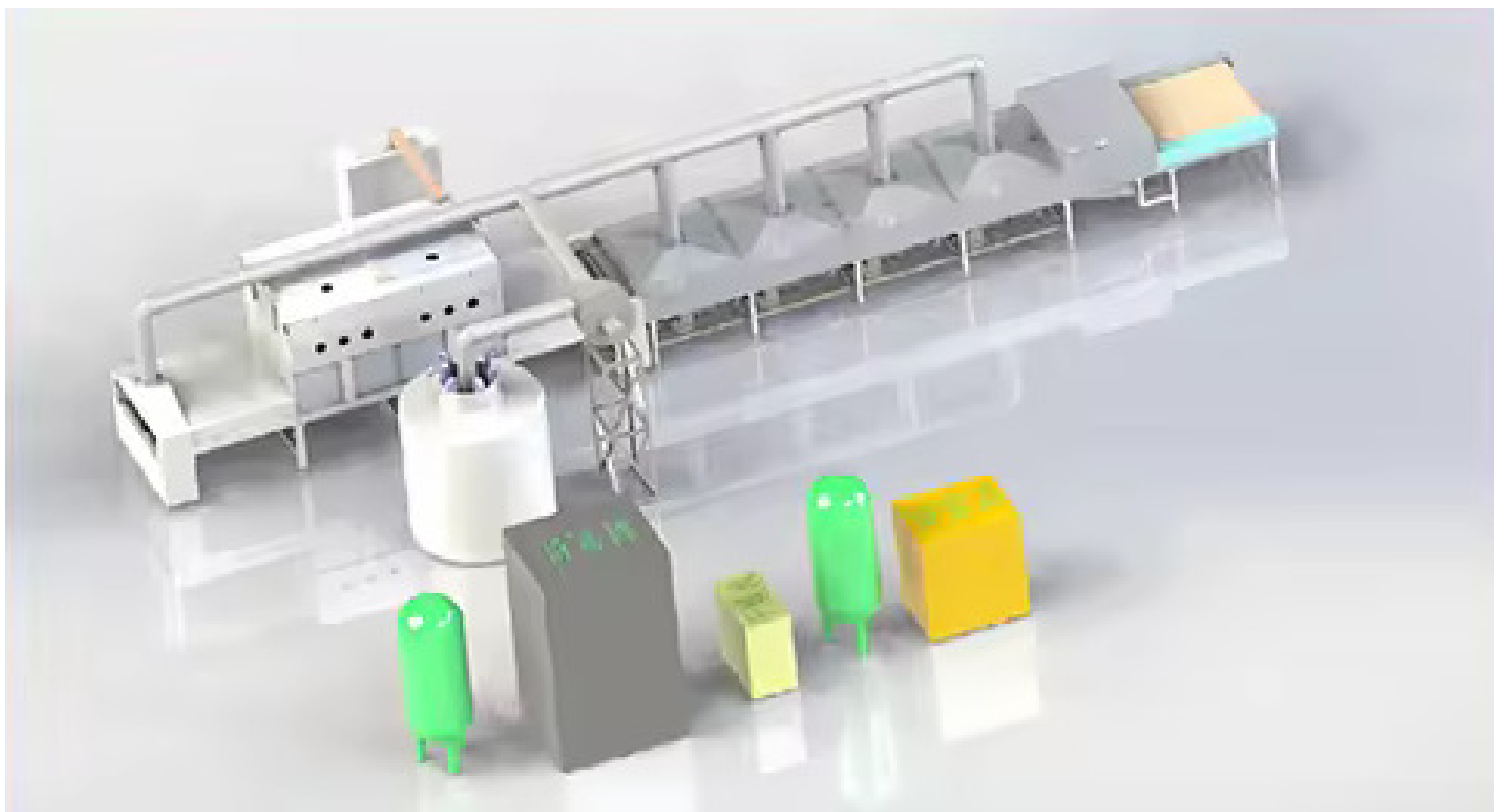
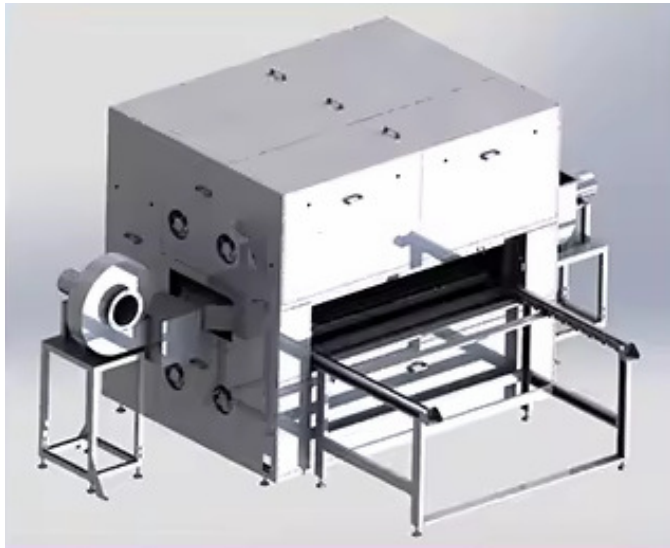
Additionally, the use of microwave energy can result in energy savings compared to conventional drying methods, contributing to cost efficiency and environmental sustainability.

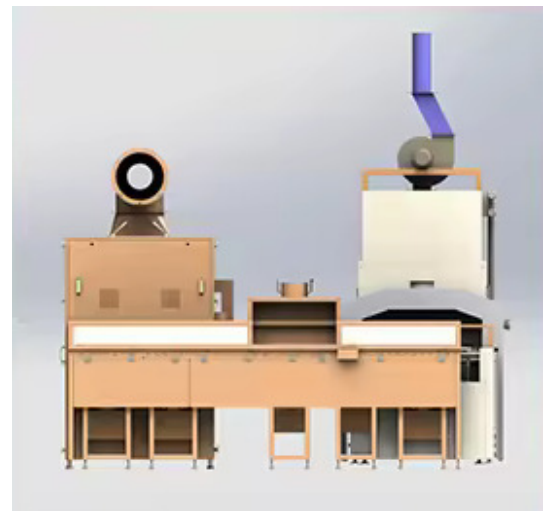
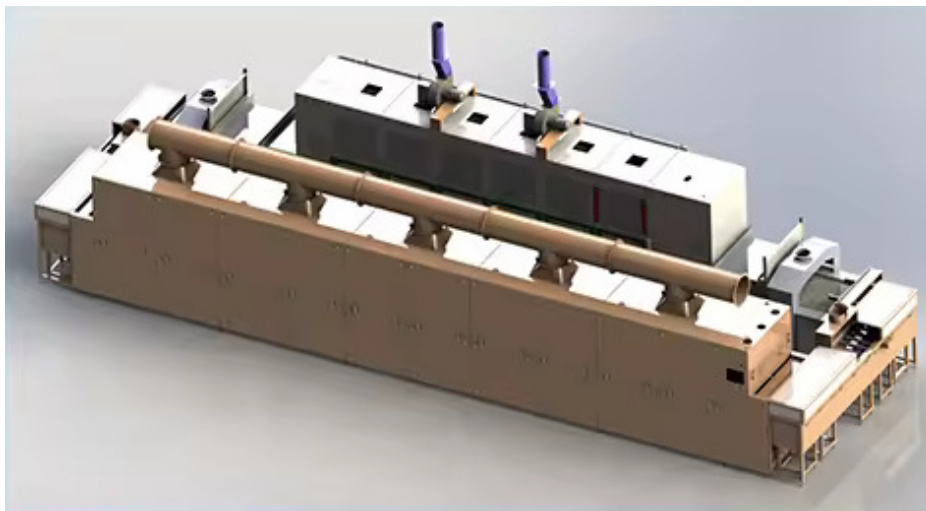
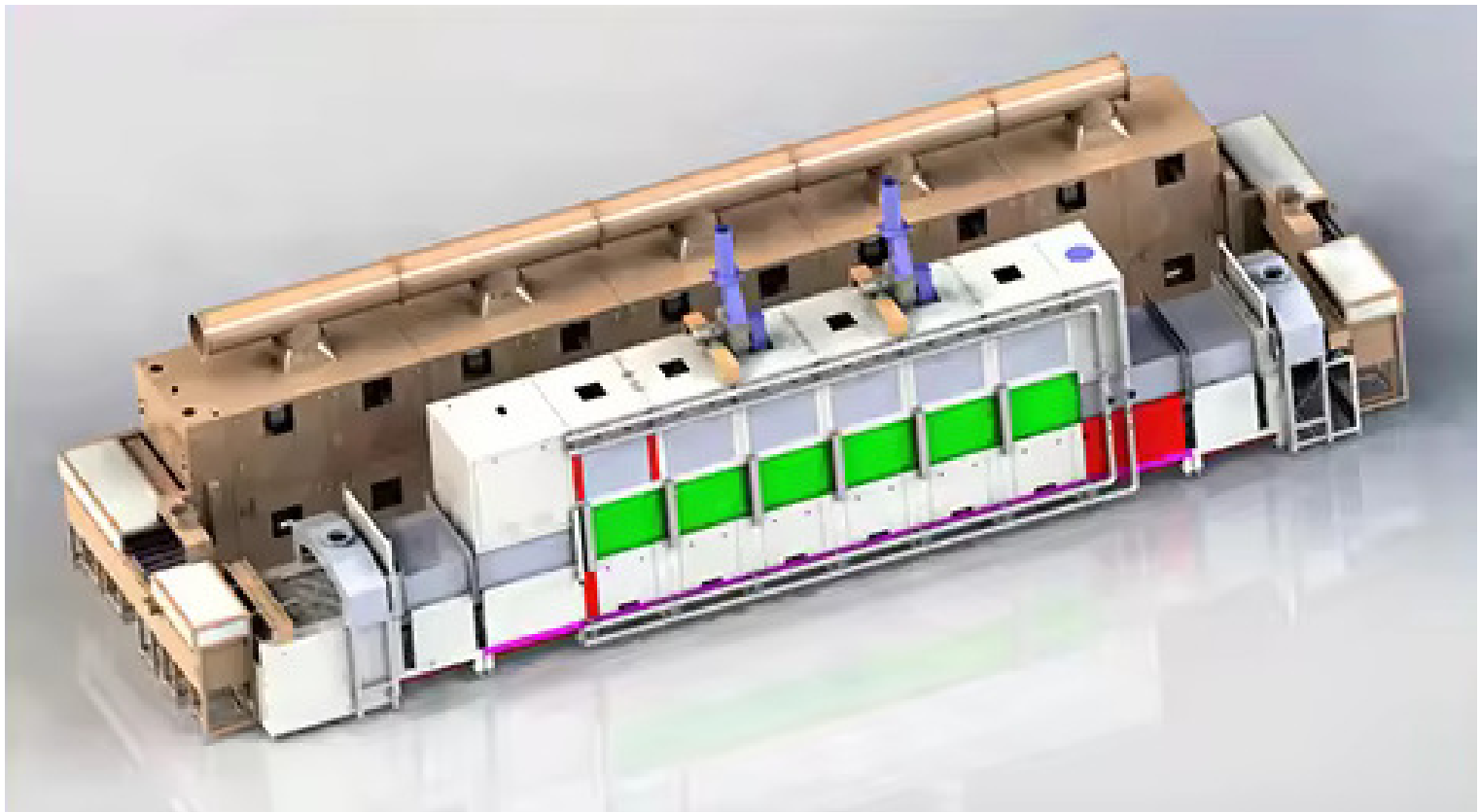
Overall, the Microwave Honeycomb Ceramic Machine represents a game-changer in ceramic production, offering manufacturers a faster, more efficient, and more reliable solution for drying ceramic products.

**DESIGNING THE MACHINERY FOR THE CUSTOMERS**



**DESIGNING THE MACHINERY FOR THE CUSTOMERS**







EACH ORDER IS CAREFULLY PREPARED AND SHIPPED



### Advanced Microwave Ceramic Drying System

Presenting the state-of-the-art Microwave Ceramic Drying System by Sun-Groupe. Engineered for precision drying in diverse industries, this versatile drying oven ensures unmatched efficiency and reliability. Constructed from robust SUS304 stainless steel, it guarantees durability. With powerful steam heating and PLC control, it delivers high-efficiency drying for chemical, plastics, and food processing. Backed by a 1-year warranty and comprehensive machinery test reports, Sun-Groupe stands as your trusted partner for superior quality and performance.



### Categories

#### MAGNETRON

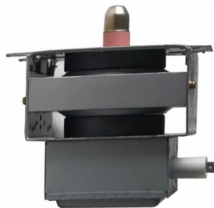
- SG-MAG-B01 - INDUSTRIAL MICROWAVE MAGNETRON 1000W
- SG-MAG-B02 - INDUSTRIAL MICROWAVE MAGNETRON 1500W
- SG-MAG-B03 - INDUSTRIAL MICROWAVE MAGNETRON 1000W ADJUSTABLE
- SG-MAG-B04 - INDUSTRIAL MICROWAVE MAGNETRON 1200W



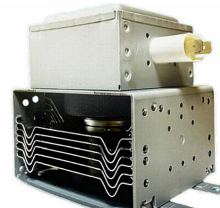
SG-MAG-B01



SG-MAG-B02



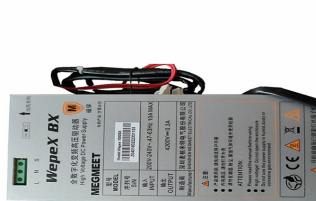
SG-MAG-B03



SG-MAG-B04

#### POWER SUPPLY

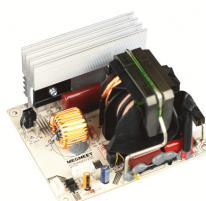
- SG-PS-B03 - INDUSTRIAL MICROWAVE AIR COOLING POWER SUPPLY 1500W
- SG-PS-B04 - INDUSTRIAL MICROWAVE WATER COOLING POWER SUPPLY 2000W
- SG-PS-B05 - INDUSTRIAL MICROWAVE POWER SUPPLY 2000W
- SG-PS-B06 - INDUSTRIAL MICROWAVE POWER SUPPLY 2000W
- SG-PS-B07 - INDUSTRIAL MICROWAVE FORCED AIR POWER SUPPLY 1600W
- SG-PS-B08 - INDUSTRIAL MICROWAVE FORCED AIR POWER SUPPLY 1280W



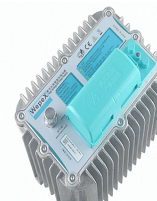
SG-PS-B03



SG-PS-B04



SG-PS-B05



SG-PS-B06



SG-PS-B07



SG-PS-B08



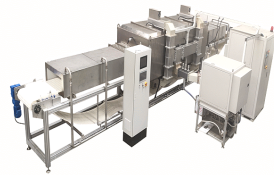
### Categories

#### MACHINE

- SG-MW-B01 - INDUSTRIAL MICROWAVE MACHINE FOR BOX LUNCH REHEAT
- SG-MW-B02 - INDUSTRIAL MICROWAVE MACHINE FOR DEFROSTING MEAT
- SG-MW-B03 - INDUSTRIAL MICROWAVE MACHINE FOR DRYING - STERILIZATION - PUFFING



SG-MW-B01



SG-MW-B02



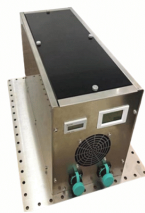
SG-MW-B03

#### MICROWAVE GENERATOR

- SG-MG-B01 - INDUSTRIAL MICROWAVE GENERATOR 850W
- SG-MG-B02 - INDUSTRIAL MICROWAVE GENERATOR 1500W



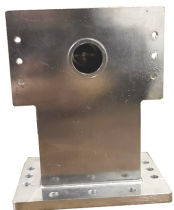
SG-MG-B01



SG-MG-B02

#### WAVE GUIDE

- SG-WG-B02 - INDUSTRIAL MICROWAVE WAVE GUIDE 3.30GHZ



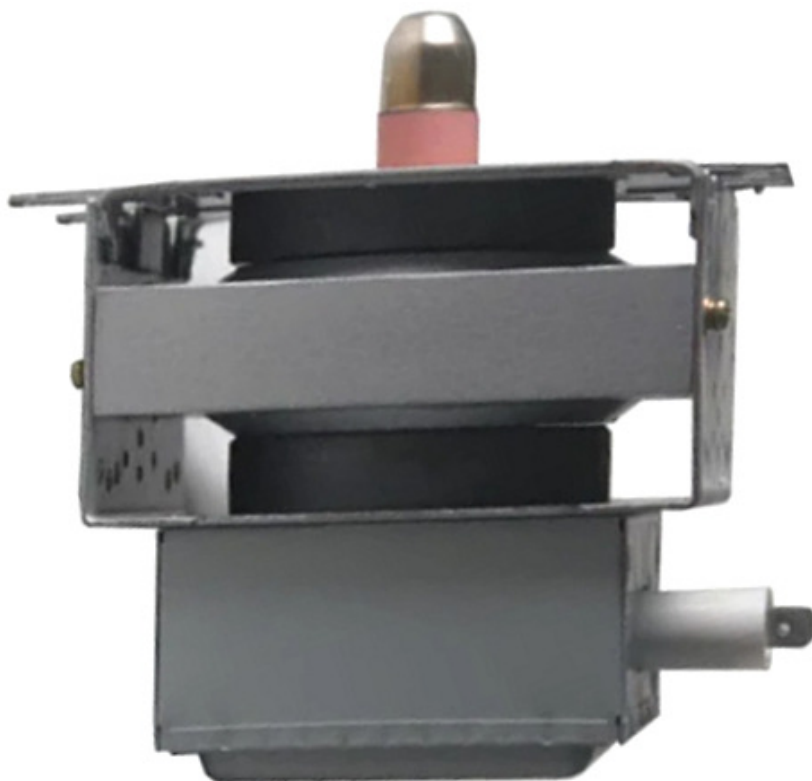
SG-WG-B02

**PRODUCTS****SG-MAG-B01 - INDUSTRIAL MICROWAVE MAGNETRON 1000W****TECHNICAL DATA**

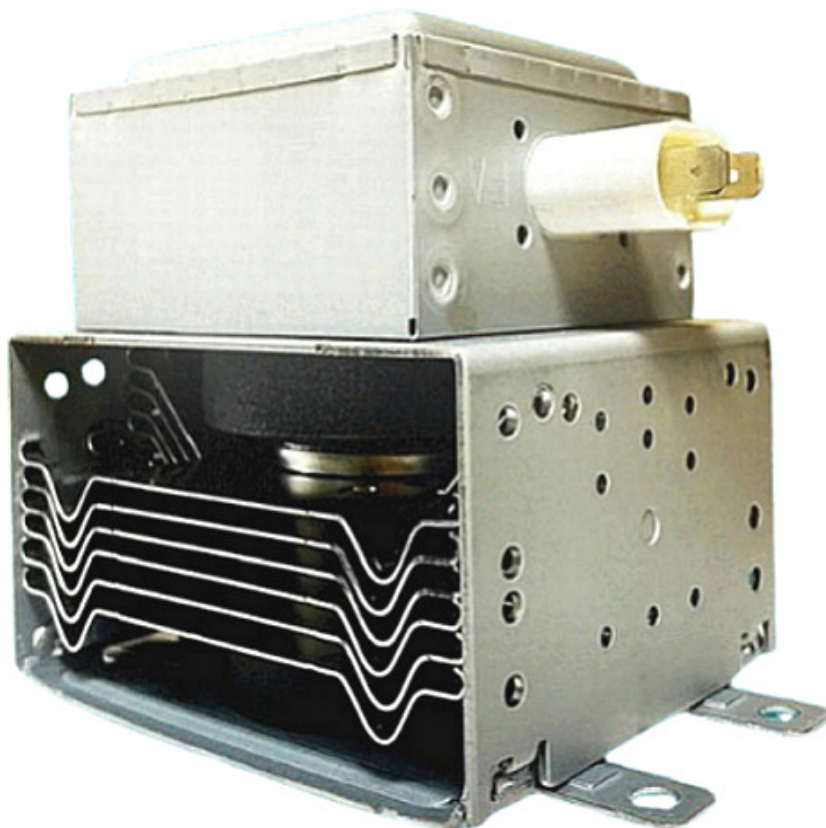
MODEL	SG-MAG-B01	COOLING METHOD	Water cooling soft water (or add derusting)
PRODUCER MODEL	OM75P-11-EDYF	SIZE	23x22x22 cm
PEAK ANODE VOLTAGE	4.45kV	INSTALLATION SIZE	115x35 mm
MEAN ANODE CURRENT	330 mA		
OUTPUT POWER	1000W		
FILAMENT VOLTAGE	3.15V		
FREQUENCY	2458MHZ		
COOLING WATER FLOW	1.3 L/Min	CATEGORY	MAGNETRON

**PRODUCTS****SG-MAG-B02 - INDUSTRIAL MICROWAVE MAGNETRON 1500W****TECHNICAL DATA**

MODEL	SG-MAG-B02	COOLING METHOD	Water cooling soft water (or add derusting)
PRODUCER MODEL	2M463	SIZE	23x22x22 cm
ANODE VOLTAGE EBM	4.45kV	INSTALLATION SIZE	115x35 mm
FILAMENT CURRENT	8.5 A		
OUTPUT POWER	1500W		
FILAMENT VOLTAGE	3.0V		
FREQUENCY	2458MHZ		
COOLING WATER FLOW	-	CATEGORY	MAGNETRON

**PRODUCTS****SG-MAG-B03 - INDUSTRIAL MICROWAVE MAGNETRON 1000W ADJUSTABLE****TECHNICAL DATA**

MODEL	SG-MAG-B03	COOLING METHOD	Air cooling
PRODUCER MODEL	OM75P-11-ESDYF	SIZE	23x23x23 cm
PEAK ANODE VOLTAGE	4.45kV	INSTALLATION SIZE	-
MEAN ANODE CURRENT	330 mA		
OUTPUT POWER	1000W (Adjustable)		
FILAMENT VOLTAGE	3.15V		
FREQUENCY	2450MHZ		
EFFICIENCY	71%	CATEGORY	MAGNETRON

**PRODUCTS****SG-MAG-B04 - INDUSTRIAL MICROWAVE MAGNETRON 1200W****TECHNICAL DATA**

MODEL	SG-MAG-B04	COOLING METHOD	Air cooling
PRODUCER MODEL	2M343K	SIZE	22x23x23 cm
PEAK ANODE VOLTAGE	4.5kV	INSTALLATION SIZE	-
MEAN ANODE CURRENT	330 mA		
OUTPUT POWER	1200W (Adjustable)		
FILAMENT CURRENT	8.5 A		
FREQUENCY	2458MHZ		
EFFICIENCY	75%	CATEGORY	MAGNETRON

**SG-PS-B03 - INDUSTRIAL MICROWAVE AIR COOLING POWER SUPPLY 1500W**



### TECHNICAL DATA



MODEL	SG-PS-B03	MAX ENDURE IN. VOLTAGE	300 VAC (NO DAMMAGE)
PRODUCER MODEL	WEPEX_1000BX(AIR)	RATED OUPUT ANODE HV	4200 VDC
INPUT VOLTAGE RANGE	180 VAC - 264 VAC	RATED ANODE O. CURRENT	330 mA
NORMAL VOLTAGE RANGE	200 VAC - 240 VAC	COOLING METHOD	Air
POWER	1350W (200-1500W)	FILAMENT VOLTAGE RANGE	3-3.3V (TYP 3.5V)
FREQUENCY	47-63 HZ	FILAMENT CURRENT RANGE	8-9A (TYP 10A)
MAX INPUT AC CURRENT	10A MAX		
LEAKAGE CURRENT	LESS 0.5mA (240 VAC)	CATEGORY	POWER SUPPLY



## PRODUCTS

**SG-PS-B04 - INDUSTRIAL MICROWAVE WATER COOLING POWER SUPPLY 2000W**



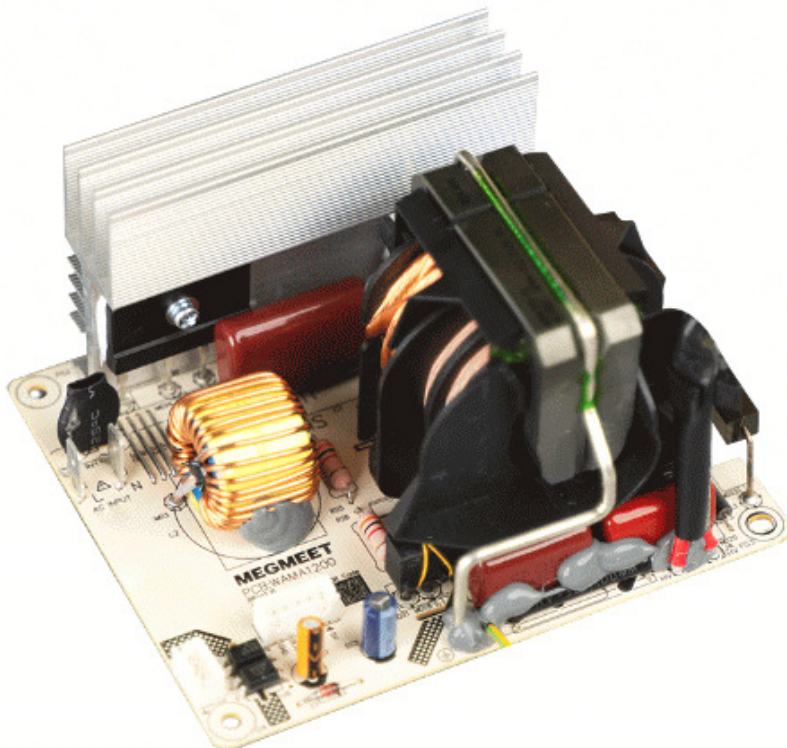
## TECHNICAL DATA



MODEL	SG-PS-B04	MAX ENDURE IN. VOLTAGE	300 VAC (NO DAMMAGE)
PRODUCER MODEL	WEPEX_2000S(WATER)	RATED OUPUT ANODE HV	4200 VDC
INPUT VOLTAGE RANGE	190 VAC - 264 VAC	RATED ANODE O. CURRENT	330 mA
NORMAL VOLTAGE RANGE	200 VAC - 240 VAC	COOLING METHOD	Water
POWER	1300W (200-2000W)	FILAMENT VOLTAGE RANGE	3.3V
FREQUENCY	47-63 HZ	FILAMENT CURRENT RANGE	9A
MAX INPUT AC CURRENT	10A MAX		
LEAKAGE CURRENT	LESS 1.7mA (220 VAC)	CATEGORY	POWER SUPPLY

## PRODUCTS

**SG-PS-B05 - INDUSTRIAL MICROWAVE POWER SUPPLY 2000W**



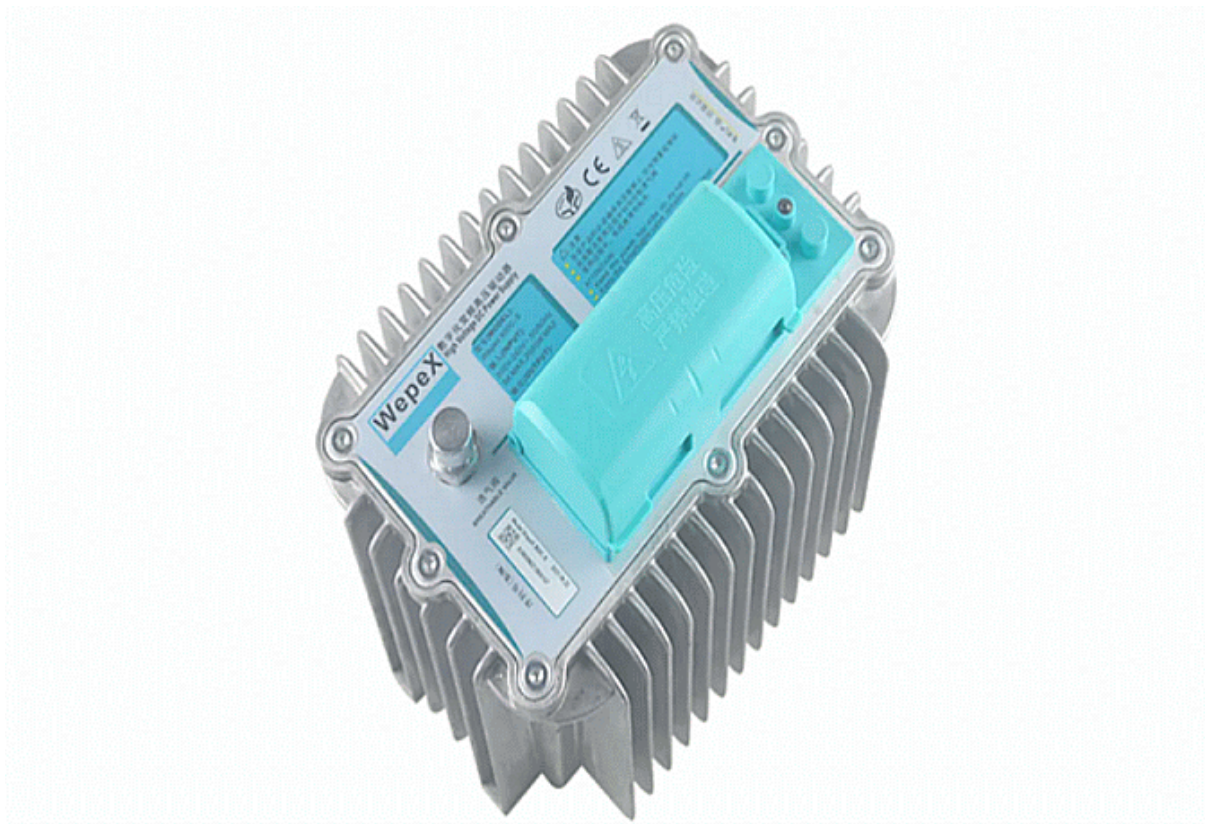
### TECHNICAL DATA



MODEL	SG-PS-B05	MAX ENDURE IN. VOLTAGE	300 VAC (NO DAMMAGE)
PRODUCER MODEL	WAMA 2000	RATED OUPUT ANODE HV	4200 VDC
INPUT VOLTAGE RANGE	180 VAC - 264 VAC	RATED ANODE O. CURRENT	430 mA
NORMAL VOLTAGE RANGE	200 VAC - 240 VAC		
POWER	200W (170-2000W)	AC RMS OVP	290 VAC TYP
FREQUENCY	47-63 HZ	AC RMS UVP	140 VAC TYP
MAX INPUT AC CURRENT	12A MAX		
LEAKAGE CURRENT	LESS 0.5mA (220 VAC)	CATEGORY	POWER SUPPLY

**PRODUCTS**

**SG-PS-B06 - INDUSTRIAL MICROWAVE POWER SUPPLY 2000W**



**TECHNICAL DATA**



MODEL	SG-PS-B06	MAX ENDURE IN. VOLTAGE	300 VAC (NO DAMMAGE)
PRODUCER MODEL	WEPEX_900C	RATED OUPUT ANODE HV	4200 VDC
INPUT VOLTAGE RANGE	185 VAC - 264 VAC	RATED ANODE O. CURRENT	350 mA
NORMAL VOLTAGE RANGE	200 VAC - 240 VAC	COOLING METHOD	Air / Liquid
POWER	2000W (200-2000W)	FILAMENT VOLTAGE RANGE	3.3V
FREQUENCY	47-63 HZ	FILAMENT CURRENT RANGE	10A
MAX INPUT AC CURRENT	10A MAX		
LEAKAGE CURRENT	LESS 0.5mA (220 VAC)	CATEGORY	POWER SUPPLY

## PRODUCTS

**SG-PS-B07 - INDUSTRIAL MICROWAVE FORCED AIR POWER SUPPLY 1600W**



### TECHNICAL DATA



MODEL	SG-PS-B07	MAX ENDURE IN. VOLTAGE	300 VAC (NO DAMMAGE)
PRODUCER MODEL	WEPEX_1600A	RATED OUPUT ANODE HV	4200 VDC
INPUT VOLTAGE RANGE	180 VAC - 264 VAC	RATED ANODE O. CURRENT	350 mA
NORMAL VOLTAGE RANGE	200 VAC - 240 VAC	COOLING METHOD	Forced Air
POWER	2000W (500-1600W)	FILAMENT VOLTAGE RANGE	3.3V
FREQUENCY	47-63 HZ	FILAMENT CURRENT RANGE	10A
MAX INPUT AC CURRENT	10A MAX		
LEAKAGE CURRENT	LESS 0.5mA (240 VAC)	CATEGORY	POWER SUPPLY

## PRODUCTS

**SG-PS-B08 - INDUSTRIAL MICROWAVE FORCED AIR POWER SUPPLY 1280W**



### TECHNICAL DATA



MODEL	SG-PS-B08	MAX ENDURE IN. VOLTAGE	300 VAC (NO DAMMAGE)
PRODUCER MODEL	WEPEX_1000B-TX	RATED OUPUT ANODE HV	4200 VDC
INPUT VOLTAGE RANGE	180 VAC - 264 VAC	RATED ANODE O. CURRENT	350 mA
NORMAL VOLTAGE RANGE	200 VAC - 240 VAC	COOLING METHOD	Forced Air
POWER	1280 (Analog and Adjustable)	FILAMENT VOLTAGE RANGE	3.3V
FREQUENCY	47-63 HZ	FILAMENT CURRENT RANGE	10A
MAX INPUT AC CURRENT	10A MAX		
LEAKAGE CURRENT	LESS 0.5mA (240 VAC)	CATEGORY	POWER SUPPLY

## PRODUCTS

**SG-MW-B01 - INDUSTRIAL MICROWAVE MACHINE FOR BOX LUNCH REHEAT**



### TECHNICAL DATA



MODEL	SG-MW-B01	APPLICATION	Kitchen, exhibition, high speed
PRODUCER MODEL	SG-MW-B01		Rail station, community
MICROWAVE POWER	12-24 kW (Customizable)	FEATURE	Easy operation
EQUIPMENT SIZE	4.0x0.8x2.0m	WEIGHT	5 Tons
COOLING WAY	Air	FUNCTION	High temperature high pressure sterilizing
REGULATING THE WAY	LCD Touch		
CONVEYOR BELT WIDTH	450 mm	MATERIAL	Stainless Steel
MICROWAVE SYSTEMS	Frequency conversion Control	CATEGORY	MACHINE

### ADDITIONAL INFORMATION

ADVANTAGE	Easy operation	SUPPLY ABILITY	500 pieces per Month
QUALITY	High Level	CUSTOMIZATION	Use Your Logo
EFFICIENCY	High		

## PRODUCTS

**SG-MW-B02 - INDUSTRIAL MICROWAVE MACHINE FOR DEFROSTING MEAT**



### TECHNICAL DATA



MODEL	SG-MW-B02	MICROWAVE SYSTEMS	Adjusted from 0.5 to 5m/min
PRODUCER MODEL	SG-MW-B02	APPLICATION	Frquency conversion Control
MICROWAVE POWER	12-24 kW (Customizable)	FEATURE	Thawing degree of different
POWER INPUT	100 kVA	WEIGHT	Types of meat products
POWER OUPUT	75 kW	FUNCTION	Easy operation
EQUIPMENT SIZE	12.0x3.5x2.5m	MATERIAL	5 Tons
COOLING WAY	Air	CATEGORY	High temperature high pressure
REGULATING THE WAY	LCD Touch		sterilizing
CONVEYOR BELT WIDTH	610 mm		Stainless Steel
TRANSMISSION MODE	Transpeed of the PP chain		Drying Oven

### ADDITIONAL INFORMATION

ADVANTAGE	Easy operation	SUPPLY ABILITY	500 pieces per Month
QUALITY	High Level	CUSTOMIZATION	Use Your Logo
EFFICIENCY	High		

## PRODUCTS

**SG-MW-B03 - INDUSTRIAL MICROWAVE MACHINE FOR DRYING - STERILIZATION - PUFFING**



### TECHNICAL DATA



MODEL	SG-MW-B03		Adjusted from 0.5 to 5m/min
PRODUCER MODEL	SG-MW-B03	MICROWAVE SYSTEMS	Frquency conversion Control
MICROWAVE POWER	12-100 kW (Customizable)	APPLICATION	Drying, Sterilization, Puffing
POWER INPUT	120 kVA		
POWER OUPUT	75-100 kW	FEATURE	Precise temprature control
EQUIPMENT SIZE	12.0x3.5x2.5m	WEIGHT	5 Tons
COOLING WAY	Air	FUNCTION	Drying and remove water
REGULATING THE WAY	LCD Touch		
CONVEYOR BELT WIDTH	610 mm (Customizable)	MATERIAL	Stainless Steel
TRANSMISSION MODE	Transpeed of the PP chain	CATEGORY	Drying Oven

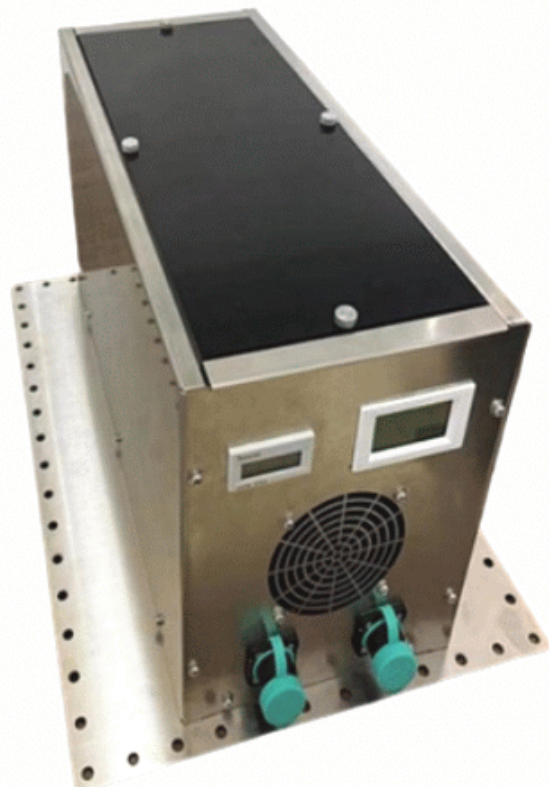
### ADDITIONAL INFORMATION

ADVANTAGE	Easy operation	SUPPLY ABILITY	20 pieces per Month
QUALITY	High Level	CUSTOMIZATION	Use Your Logo
EFFICIENCY	High		

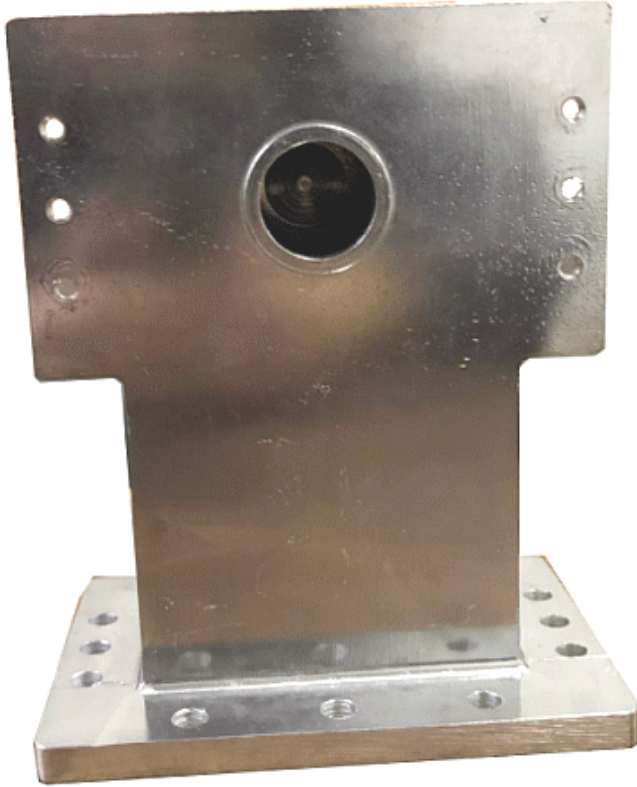


**PRODUCTS****SG-MG-B01 - INDUSTRIAL MICROWAVE GENERATOR 850W****TECHNICAL DATA**

MODEL	SG-MG-B01	FREQUENCY	47-63 Hz
PRODUCER MODEL	PDUN-1000PLUS	INPUT CURRENT	16A
MICROWAVE POWER	800W	AC INPUT	3-PIN Terminal
MICROWAVE FREQUENCY	2450 MHz		
EQUIPMENT SIZE	43x38x38cm		
COOLING WAY	Air		
INPUT VOLTAGE	200-240 VAC		
MAX INPUT VOLTAGE	300 VAC	CATEGORY	GENERATOR

**PRODUCTS****SG-MG-B02 - INDUSTRIAL MICROWAVE GENERATOR 1500W****TECHNICAL DATA**

MODEL	SG-MG-B02	FREQUENCY	47-63 Hz
PRODUCER MODEL	PDUN-1000PLUS	INPUT CURRENT	10A
MICROWAVE POWER	1500W		
MICROWAVE FREQUENCY	2450 MHz		
EQUIPMENT SIZE	50x38x25cm		
COOLING WAY	Water		
INPUT VOLTAGE	190-264 VAC		
LEAKAGE CURRENT	1.7 mA (220 VAC)	CATEGORY	GENERATOR

**PRODUCTS****SG-WG-B02 - INDUSTRIAL MICROWAVE WAVE GUIDE 3.30GHZ****TECHNICAL DATA**

MODEL	SG-WG-B02	CHINA STANDARD	BJ26
PRODUCER MODEL	WR340	UK STANDARD	WG9A
WEIGHT	0.6 kg	RATED WITHS. FREQUENCY 2.17-3.30 GHz	
SHAPE	Rectangular		
MATERIAL	Aluminium Alloy		
EQUIPMENT SIZE	137.5x94.8x165.1 mm		
FLANGE	FDP26	CATEGORY	WAVE GUIDE

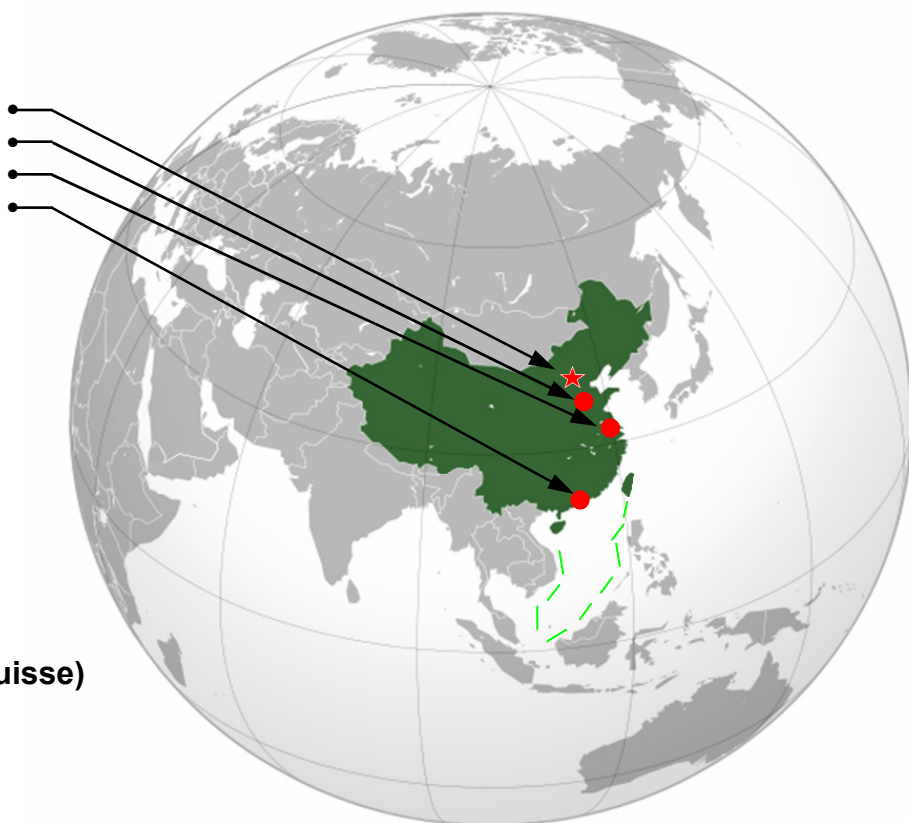
**Sun-Groupe Co. Ltd (China)**

Beijing  
Head Quarter, Puyang (Henan)  
Shanghai, Dongguan, Zhongshan  
Logistic Hong Kong



**Sun-Groupe Sàrl (Suisse)**

• Cornaux  
• Hauterive



**INDUSTRIAL MICROWAVE MACHINES AND EQUIPMENT**

